

Meath Field Names

Table of contents

Navigation	3
Displaying Layers	5
Displaying Fields/Townlands	7
Basic Search	9
Advanced Search	10
Google Street View	13
Advanced Features	14
Zoom to Location	14
Placing a Radius	15
Report Information	16
Supported Browsers	18

Navigation

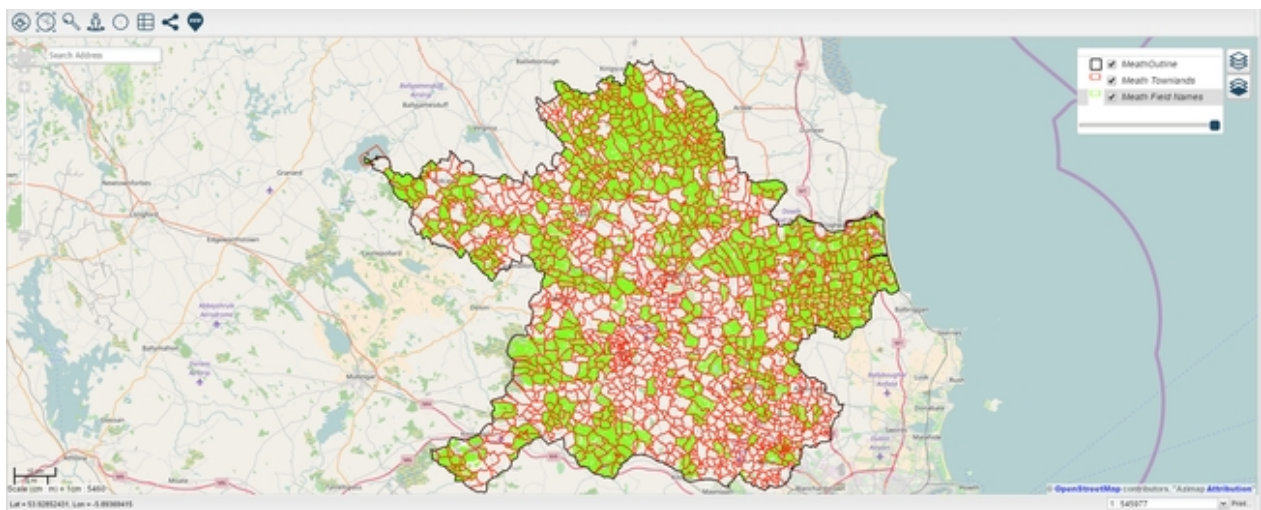
Navigate to www.meathfieldnames.com

Select **Interactive Map**.

The map will typically take a few seconds to load due to such a large dataset being loaded.

This is the main interface of Meath Field Names Mapping.

County Meath will be displayed by default.




Using the navigation scrollbar on the left allows you to navigate the map.

Select  to zoom in on the map.

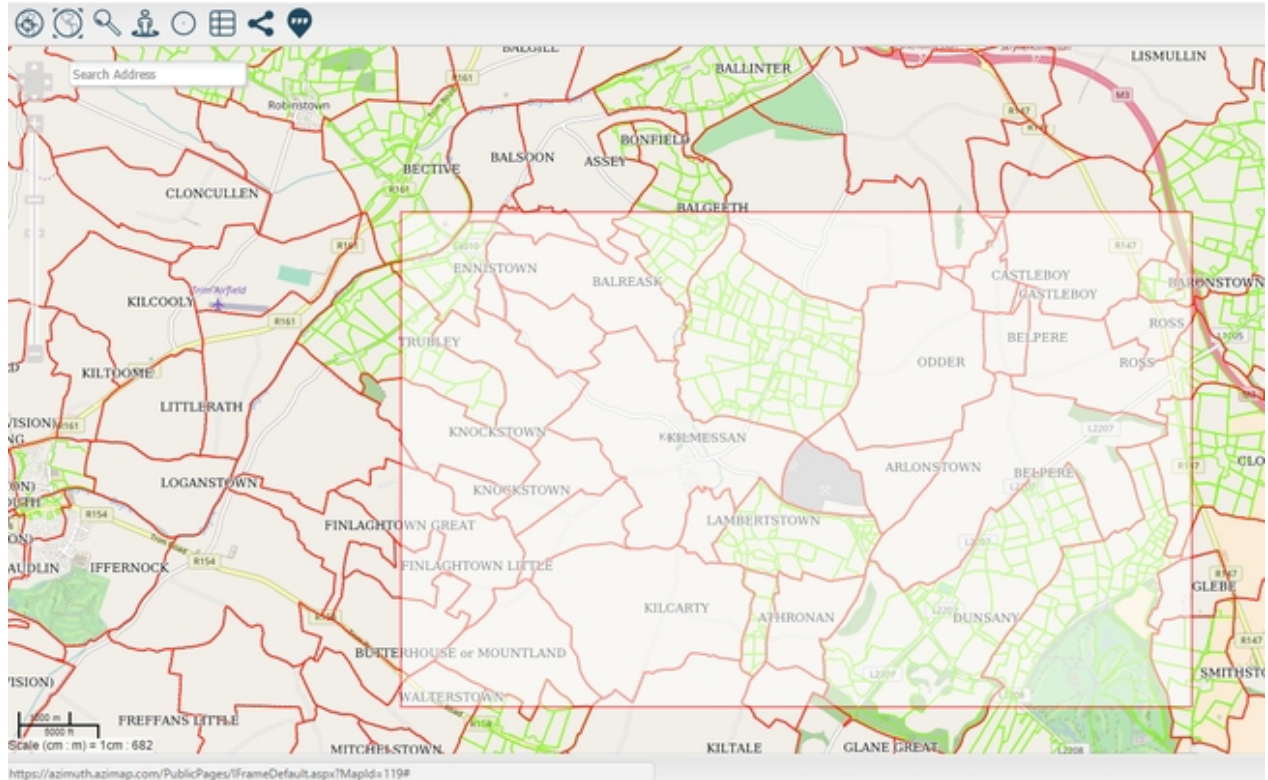


You can drag the slider up and down to change the level of zoom.

To zoom out of the map select 

You can also zoom using shift.

Hold in **Shift** button, Left-click and drag to adjust the size of the zoom box to the area you wish to zoom.




Alternatively, use your mouse's **scroll wheel** to zoom in and out accordingly.

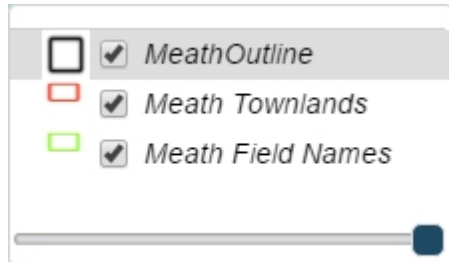



Select the button to zoom out to the extent of the map in order to see the full view of Meath.

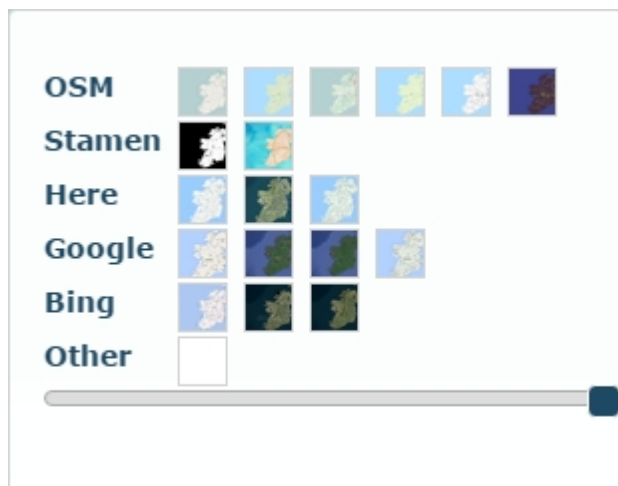
Displaying Layers

Selecting the  button will open the layer panel.

Here you can select what layers you wish to display.

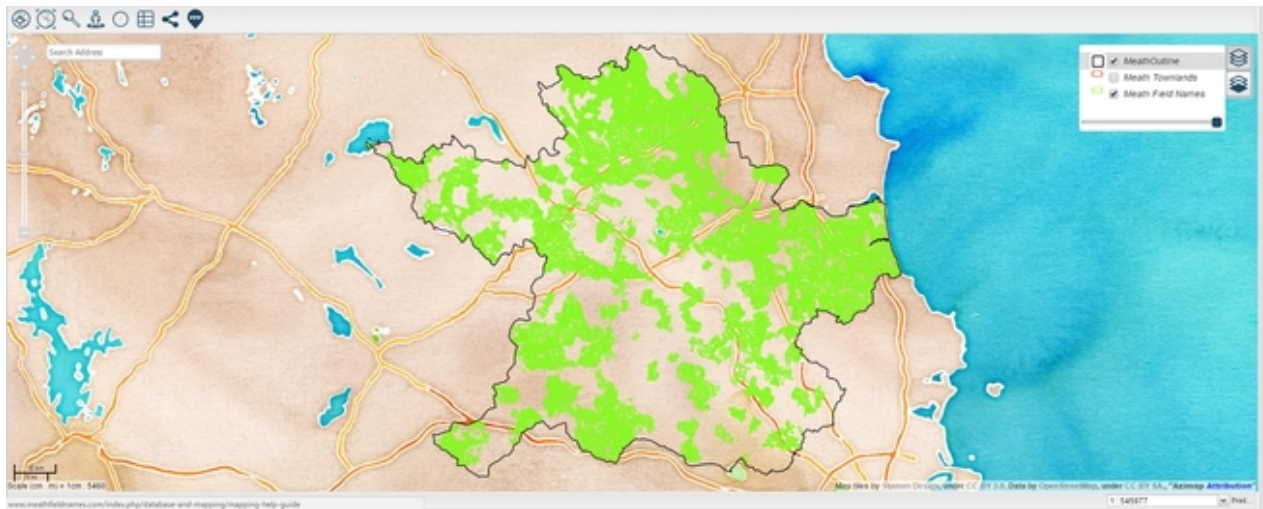


Selecting the  button will open the baselayer panel.

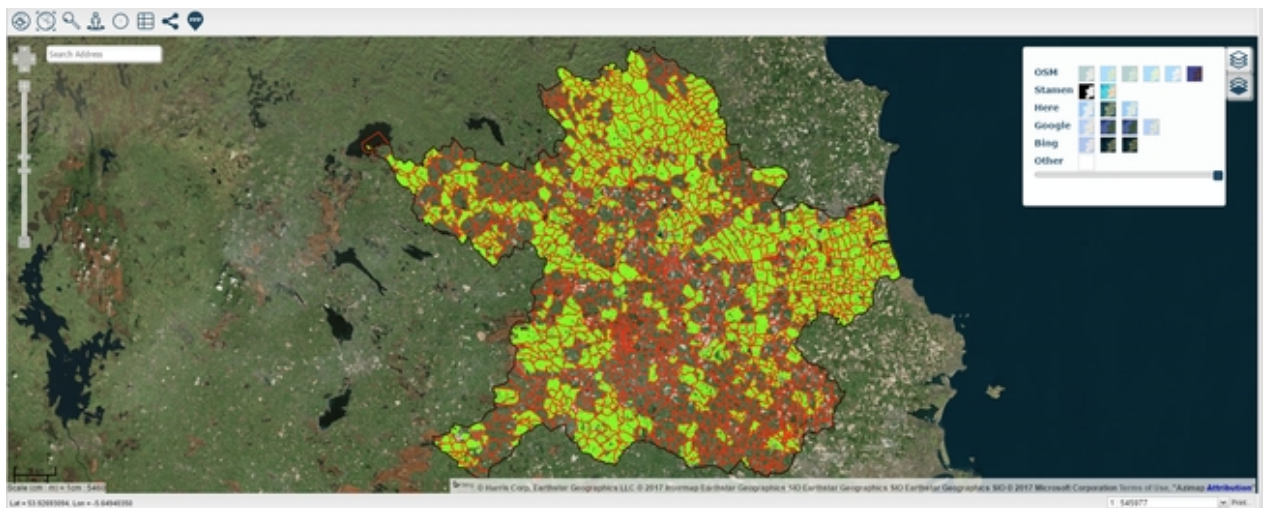


Here we have un-selected the **Meath Townlands** layer. As a result, the townlands aren't displayed. The same process applies for any other layers you wish not to display. We have also selected **Stamen Watercolour** as the base layer.

Meath Field Names



In this example, we have selected **Bing Aerial** as the base layer. As you'll see from the panel, there are several others to choose from.

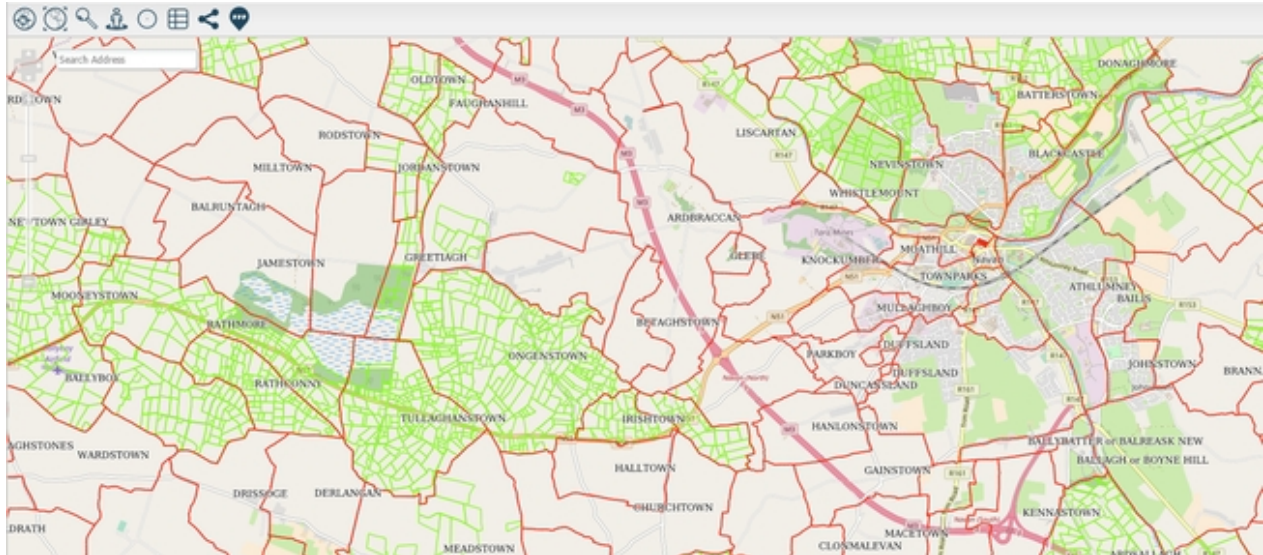


You can also drag the opacity slider at the base of each panel to change the opacity of the selected layer or baselayer.

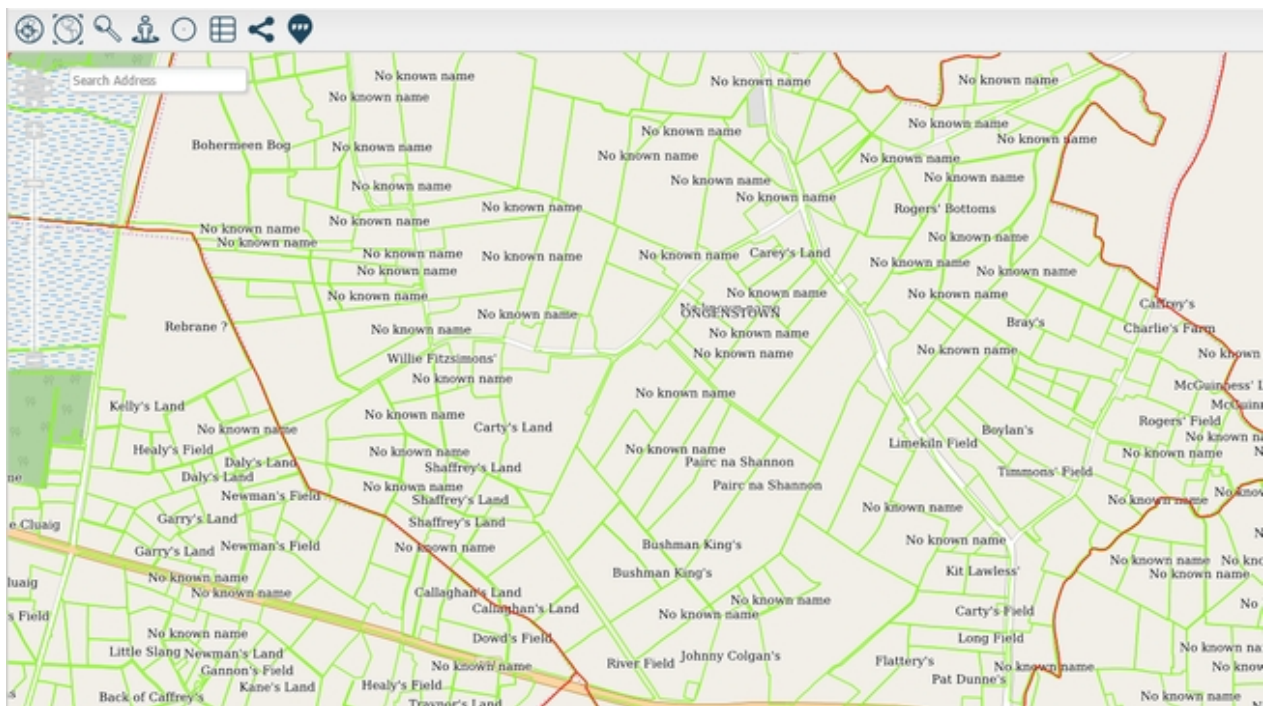


Displaying Fields/Townlands

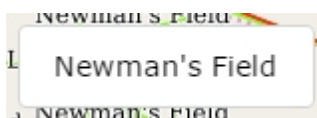
You must be within a certain zoom range for townland names to appear. Try to match the zoom level in the following image and as you'll see, all the townland names will be displayed.



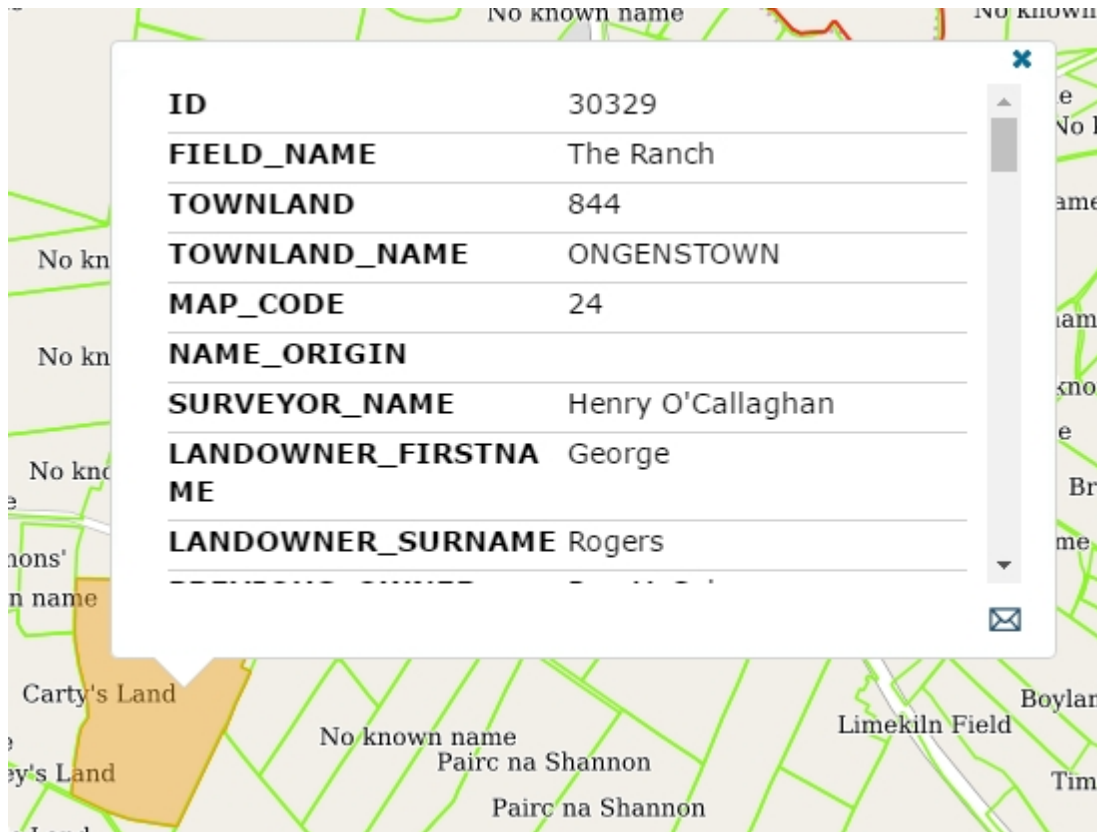
To view field names, you may need to zoom in further. Again, try to match the following.



Hovering over a field will display its name in a popup, if your preferred zoom level gets too cluttered.



When you click on a field, a window will display with all information regarding the field. You can scroll down through it to view more information.




Left click and drag the cursor to move to a different area of the map.

Alternatively, Use the arrow buttons to pan across the map in any direction

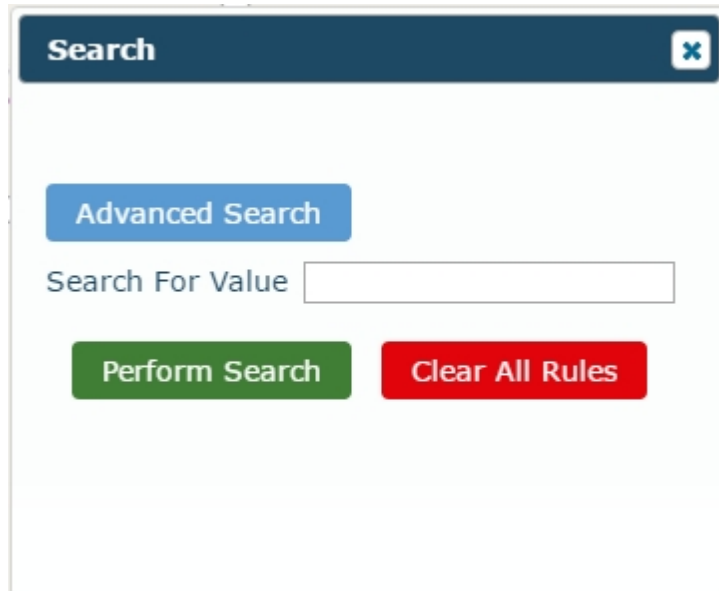


Note: In some cases, fields were surveyed but no field name was given. However, other information related to the field may have been submitted.

Basic Search

Select  to open the Search Panel.

Within **Basic Search** you can enter any criteria and select **Perform Search**.



Here we will search for cricket.

Enter cricket and select **Perform Search**.




ID	Field_Name	Townland	Townland_Name	Map_Code	Name_Origin	Notes
5144	Cricket Field	755	RATHALDRON	25		Wet patches in field have reeds. Intermittent stream now r
5535	Mill Field	793	SENECHALSTOWN	26		An old Sawmill worked in this field around 1911. It was r
5738	Cricket Bank	820	COLLIERSTOWN	27		
5844	Cricket Field	828	GAFNEY (ED Duleek)	27		
6296	The Orchard / The Mill Pond	1010	BALLYMAGARVEY	32	Features in field	In the mid 19th Century this field was an Orchard. It also
7041	The Cricket Field	1009	BELLEW	32		
7166	Pump Field	1014	DANESTOWN	32		Bellew Cricket Club played Cricket in this field. Stream flo
7213	The Cricket Field	772	FLEMINGSTOWN	26		A small post and railed field. To one side (NE Corner) the
7765	Greens Upper	1036	PIERCE TOWN	33		Prior to 1974 was several fields. Point 'A' small paddock.
7789	Cricket Field	1089	PRINCE TOWN	33		
8230	Cricket Field / Mill Road Field	1288	COULINSTOWN	38		Cricket Field - 29 acres. Some timber remains of Cricket P
8354	The Cricket Field	1132	COOLRONAN	35		The boundary with Carranstown Great townland forms the
8710	The Cricket Field	1143	PORTLESTER	35		The Rathlour-Trian road forms the northern boundary. The

24 features have been found related to cricket. Displayed at the far right will be any notes that have been made in regards to the field.

Select **Clear All Rules** to clear the performed search.

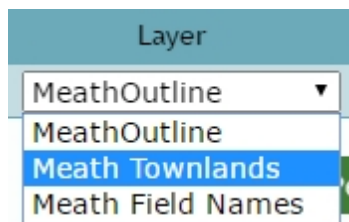
Advanced Search

Select  to open the search panel.

Select **Advanced Search**.

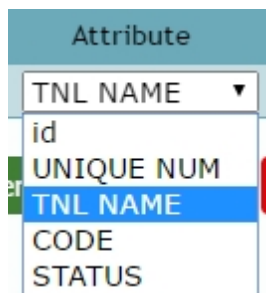
Advanced Search has the same functionality as basic search, with the addition of creating custom searches.

Select the layer you wish to search within. For this example, it will be **Townlands**.



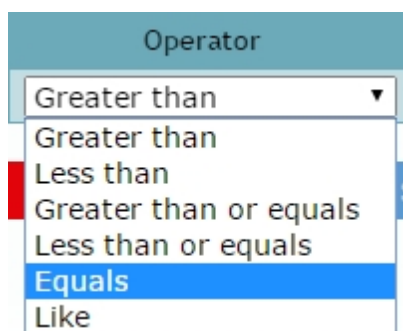
Here you can select what attribute you wish to search by.

For example, select **TNL NAME** to search by townland name.



Select what operator you wish to search by.

For example, if you wanted to find fields in the townland of **Brownstown**, you would use the **Equals** operator.



Enter the value you wish to search by.

In this example we will search for fields in the townland of **Brownstown**.

Value
Brownstown

Select **Add** to add the rule to your search.

Manage
Add

When adding more than one rule, you use **AND** or **OR**.

The **AND** operator displays results if both the first rule **AND** the second rule are true.

The **OR** operator displays results if either the first rule **OR** the second rule is true.

We have added two rules in the following example.

The first rule searches for **Townlands Equal to Brownstown**.

AND

The second rule searches for **Field Names Like Purtley**.

This search will look for the **townland equal to Brownstown** and **Field Names equal to Purtley**.

Select **Perform Search**

Displayed at the top is the number of features returned by each layer. Displayed in a table below in **Meath Field Names** will be any field names related to "purtley".

Search

Meath Field Names returned 1 features.

Meath Townlands returned 5 features.

Basic Search

Saved Search Names

Logic	Layer	Attribute	Operator	Value	Manage
AND	Meath Townlands	TWL NAME	Equals	Brownstown	Edit Delete
AND	Meath Field Names	Field Name	Like	Purtley	Edit Delete
AND	MeathOutline	ID	Greater than		Add

Perform Search

Clear All Rules

Save Search

Meath Field Names

Meath Townlands

ID	Field Name	Townland	Townland Name	Map Code	Name Origin	Notes	Surveyor Name	Landowner Firstname	Landowner Surname	Previous Owner	Estate
5546	Purtley	1032	STAFFORDSTOWN	26	Name handed down from previous workers on the farm.	This field has a flax pond.	Michael Monaghan		Monaghan Family	Allen	


Select **Meath Townlands** and you will find any townlands related to "Brownstown".

Meath Field Names		Meath Townlands		
id	UNIQUE_NUM	TNL_NAME	CODE	STATUS
82	0	BROWNSTOWN	Q14601	
708	0	BROWNSTOWN	Q17809	P
1385	0	BROWNSTOWN	Q18007	C
1396	0	BROWNSTOWN	Q16408	
1498	0	BROWNSTOWN	Q12108	

If you wish to edit or delete a rule, select **Edit** or **Delete**.

Manage
Edit Delete

Google Street View

Click  followed by a road on the map to see the **Google Street View**.

A window will appear displaying the Google Street View of the selected road.



Click and drag within this window to look around and use the navigation arrows to change location.

Note: Google Street View may only be viewable on areas where the Google Street View service is available.

Advanced Features

To view the advanced features, Select one of the topics below.

[Zoom to Location](#)

[Placing a Radius](#)

[Report Information](#)

Zoom to Location

Using the **Zoom to Location** feature, you can zoom to specific co-ordinates on the map.

For example, navigate to a section of the map you may frequently visit.

Here, we can take note of the Lat and Lon co-ordinates located at the bottom left corner of the map.

Lat = 53.63827328, Lon = -6.69652664

Now that we have the co-ordinates, Select the  button.

Enter your Latitude and Longitude co-ordinates and select **Zoom To**.



The image shows a 'Zoom To Location' dialog box with a dark blue header and a close button (X) in the top right corner. Inside the dialog, there are two main options: 'Latitude & Longitude' and 'What3Words'. The 'Latitude & Longitude' option is selected, indicated by a target icon. Below this option, there are two input fields: 'Latitude' and 'Longitude'. At the bottom of the dialog, there is a green button labeled 'ZoomTo'.

The map will now display the exact location of the entered co-ordinates.

Alternatively you can use **What3Words** to search for a location by clicking the What3Words button on the panel.

Zoom To Location

Latitude & Longitude

What3Words

ZoomTo

If you don't have 3 words for a location, click the button on the toolbar and you'll be able to generate them from there.

Placing a Radius

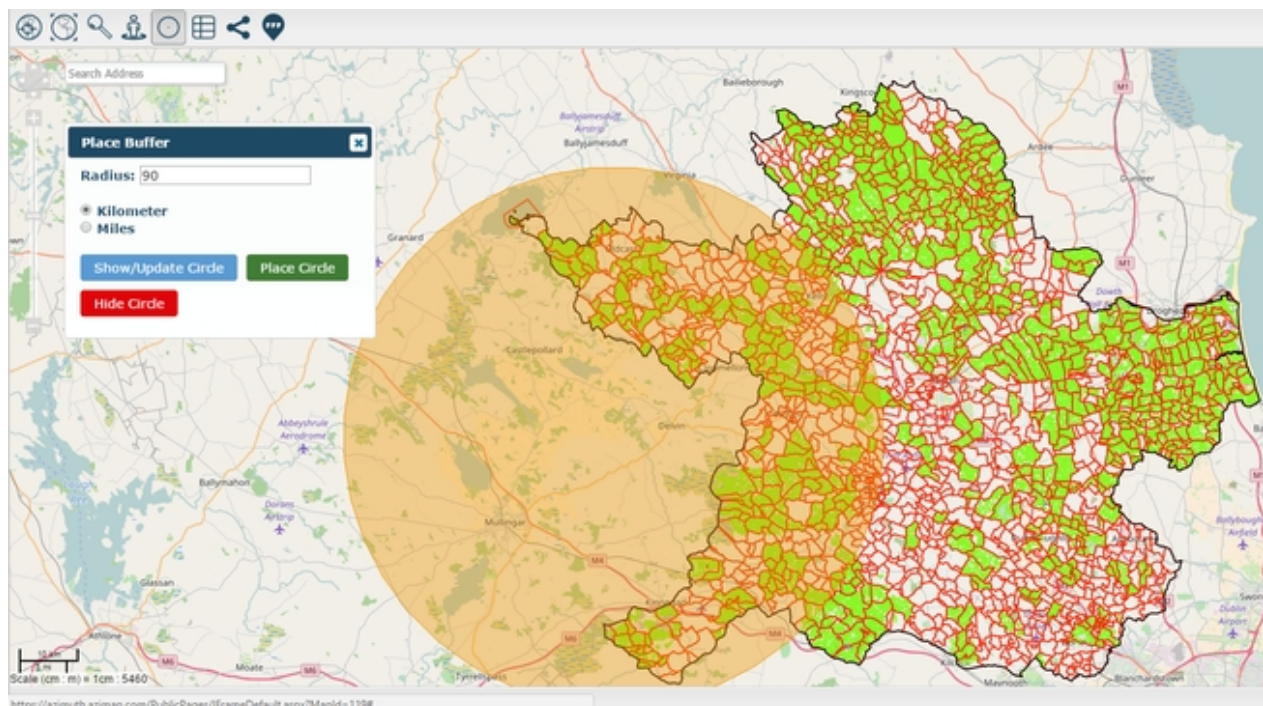
Select to place a radius around an area.

A **Place Buffer** window will appear.

Enter the size of the area you wish to place a radius around in the **Radius** box.

Select whether you want the area displayed in kilometers or miles.

Select **Place Circle** and left click on the area of the map you wish to place the radius in.

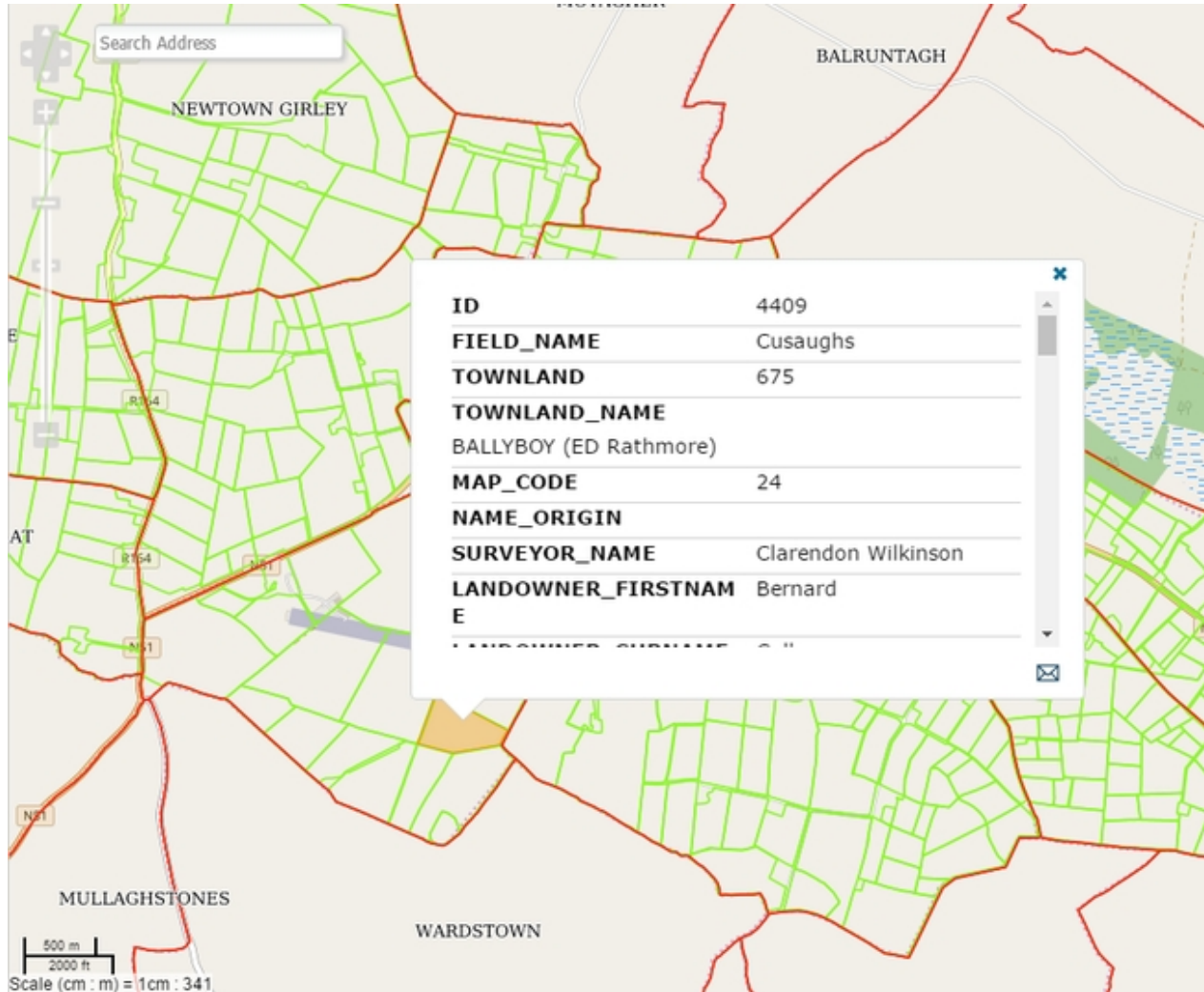


To hide the radius, select **Hide Circle**.


To change the size of the circle, enter the new radius and select **Show/Update Circle**.

Report Information

Select a feature on the map.



Click the envelope icon that appears at the bottom right of the popup. ✉

Report Information 

Something of interest to report?

Feature ID: 4409

Layer Display Name: Meath Field Nam

Layer ID: 2394

Your Name

Email Address

Tell us about this feature

Send

**Click to Attach
or drag & drop**

From this panel you can report any mistakes, missing information, or anything you'd like to say about the feature. All the feature information gets included automatically, all you have to enter is your name and email address as well as the information you want to report. You can also drag an image into the section at the bottom of the panel and it will be included as well.

Click **Send** and the report will be emailed for an administrator to look over.

Supported Browsers

The following browsers are supported for GeoAppBuilder:

- Firefox V26 +
- Chrome V32 +
- Internet Explorer 10 +